

DOUBLE-DECK ASSEMBLY WITH THREADED INSERTS (HEADER) AND CAPTIVE HEX NUTS (MECHANISM)  
 DESCRIPTION: ABOVE & BELOW PCB, DECK AND PUSH ROD LOCATION ARE AS VIEW BY USER.

PRODUCT NO. 95635-XXXXX	PUSH-ROD LOCATION		STAND-OFF HEIGHT DIM "L"	DIM "P"	(A)	(B)	(C)	MOUNTING STYLE TO PCB AND PUSH-ROD SIDE
	DECK CLOSEST TO PCB	DECK FARTHEST FROM PCB			DOUBLE - DECK HEADER 92821-XXX	EJECT MECHANISM 88644-XXXX	EJECT MECHANISM 94307-XXXX	
000CA	LEFT	RIGHT	0.0	2.8	92821-000	10CA	00CA	
020CA	LEFT	RIGHT	2.0	2.5	92821-040	12CA	00CA	
050CA	LEFT	RIGHT	5.0	2.8	57956-050	15CA	00CA	
100CA	RIGHT	LEFT	0.0	2.8	92821-000	00CA	10CA	
120CA	RIGHT	LEFT	2.0	2.5	92821-040	02CA	10CA	
150CA	RIGHT	LEFT	5.0	2.8	57956-050	05CA	10CA	
200CA	RIGHT	RIGHT	0.0	2.8	92821-000	00CA	00CA	
220CA	RIGHT	RIGHT	2.0	2.5	92821-040	02CA	00CA	
250CA	RIGHT	RIGHT	5.0	2.8	57956-050	05CA	00CA	
300CA	LEFT	LEFT	0.0	2.8	92821-000	10CA	10CA	
320CA	LEFT	LEFT	2.0	2.5	92821-040	12CA	10CA	
350CA	LEFT	LEFT	5.0	2.8	57956-050	15CA	10CA	
000CALF	LEFT	RIGHT	0.0	2.8	92821-000LF	10CA	00CA	
020CALF	LEFT	RIGHT	2.0	2.5	92821-040LF	12CA	00CA	
050CALF	LEFT	RIGHT	5.0	2.8	57956-050LF	15CA	00CA	
100CALF	RIGHT	LEFT	0.0	2.8	92821-000LF	00CA	10CA	
120CALF	RIGHT	LEFT	2.0	2.5	92821-040LF	02CA	10CA	
150CALF	RIGHT	LEFT	5.0	2.8	57956-050LF	05CA	10CA	
200CALF	RIGHT	RIGHT	0.0	2.8	92821-000LF	00CA	00CA	
220CALF	RIGHT	RIGHT	2.0	2.5	92821-040LF	02CA	00CA	
250CALF	RIGHT	RIGHT	5.0	2.8	57956-050LF	05CA	00CA	
300CALF	LEFT	LEFT	0.0	2.8	92821-000LF	10CA	10CA	
320CALF	LEFT	LEFT	2.0	2.5	92821-040LF	12CA	10CA	
350CALF	LEFT	LEFT	5.0	2.8	57956-050LF	15CA	10CA	

Tous droits strictement reserves. Reproduction ou communication a des tiers interdite sous quelque forme que ce soit sans autorisation ecrite du proprietaire. Propriete de c FCI. Droits de reproduction FCI.

All rights strictly reserved. Reproduction or issue to third parties in any form whatever is not permitted without written authority from the proprietor. Property of FCI. Copyright FCI.

FCI

A

B

mat'l. code				tolerances unless otherwise specified				CUSTOMER COPY		Electronics www.fciconnect.com	
ltr	ecn no	dr	date	linear	.X±.3				projection	title	
D	V61383	RDS	9/16/96		.XX±.13					DOUBLE-DECK	
E	V11670	RGD	6/6/01		.XXX±.051					HEADER EJECT ASSY	
F	V20419	LP	3/25/02	angles	0° ±2'					product family MCS	
G	N05-0052	WB	02/25/05	dr	D.SHEAFFER	9/16/96	← MM →	size dwg no			
H	N05-0077	WB	03/17/05	enr	D.BRANN	9/16/96		95635			
				chr	D.BRANN	9/16/96		scale	sheet 1 of 4		
				appd	D.BRANN	9/16/96	1:1				
sheet index	revision sheet	H	H	G	G	G					
		1	2	3	4						

DOUBLE-DECK ASSEMBLY WITH THREADED INSERTS (HEADER) AND CAPTIVE HEX NUTS (MECHANISM)

DESCRIPTION: ABOVE & BELOW PCB, DECK AND PUSH ROD LOCATION ARE AS VIEW BY USER.

PRODUCT NO. 95635-XXXX	PUSH-ROD LOCATION		STAND-OFF HEIGHT DIM "L"	DIM "P"	(A)	(B)	(C)	MOUNTING STYLE TO PCB AND PUSH-ROD SIDE
	DECK CLOSEST TO PCB	DECK FARTHEST FROM PCB			DOUBLE - DECK HEADER 92821-XXX	EJECT MECHANISM 88644-XXXX	EJECT MECHANISM 94307-XXXX	
500CA	RIGHT	LEFT	0.0	2.8	92821-500	10CA	00CA	
520CA	RIGHT	LEFT	2.0	2.5	92821-540	12CA	00CA	
550CA	RIGHT	LEFT	5.0	2.8	57956-550	15CA	00CA	
600CA	LEFT	RIGHT	0.0	2.8	92821-500	00CA	10CA	
620CA	LEFT	RIGHT	2.0	2.5	92821-540	02CA	10CA	
650CA	LEFT	RIGHT	5.0	2.8	57956-550	05CA	10CA	
700CA	RIGHT	RIGHT	0.0	2.8	92821-500	10CA	10CA	
700CP	RIGHT	RIGHT	0.0	2.8	92821-500	10CP	10CP	
720CA	RIGHT	RIGHT	2.0	2.5	92821-540	12CA	10CA	
750CA	RIGHT	RIGHT	5.0	2.8	57956-550	15CA	10CA	
800CA	LEFT	LEFT	0.0	2.8	92821-500	00CA	00CA	
820CA	LEFT	LEFT	2.0	2.5	92821-540	02CA	00CA	
850CA	LEFT	LEFT	5.0	2.8	57956-550	05CA	00CA	
500CALF	RIGHT	LEFT	0.0	2.8	92821-500LF	10CA	00CA	
520CALF	RIGHT	LEFT	2.0	2.5	92821-540LF	12CA	00CA	
550CALF	RIGHT	LEFT	5.0	2.8	57956-550LF	15CA	00CA	
600CALF	LEFT	RIGHT	0.0	2.8	92821-500LF	00CA	10CA	
620CALF	LEFT	RIGHT	2.0	2.5	92821-540LF	02CA	10CA	
650CALF	LEFT	RIGHT	5.0	2.8	57956-550LF	05CA	10CA	
700CALF	RIGHT	RIGHT	0.0	2.8	92821-500LF	10CA	10CA	
700CPLF	RIGHT	RIGHT	0.0	2.8	92821-500LF	10CP	10CP	
720CALF	RIGHT	RIGHT	2.0	2.5	92821-540LF	12CA	10CA	
750CALF	RIGHT	RIGHT	5.0	2.8	57956-550LF	15CA	10CA	
800CALF	LEFT	LEFT	0.0	2.8	92821-500LF	00CA	00CA	
820CALF	LEFT	LEFT	2.0	2.5	92821-540LF	02CA	00CA	
850CALF	LEFT	LEFT	5.0	2.8	57956-550LF	05CA	00CA	

NOTES (CONTINUOUS ON SHEET 3):

- EJECT FORCE 3.5kg MAX.
- EJECT TRAVEL - 8.0mm
- HEADER ASSY  
 PLASTIC: HOUSING - LCP UL94V-0 BLACK (ABOVE P.C.B.)  
 - LCP UL94V-0 NATURAL (BELOW P.C.B.)  
 LOCATOR - G.F. 6/6 NYLON UL94V-0 BLACK  
 PIN: PHOSPHOR BRONZE  
 EJECT MECHANISM ASSY  
 PLASTIC: GUIDE & PUSH ROD  
 POLYTHARAMIDE UL94V-0 BLACK  
 COVER PLATE: STAINLESS STEEL  
 EMI CONTACT: PHOSPHOR BRONZE
- FINISH - PIN  
 UNDER PLATING: 0.5µm MIN. Ni  
 CONTACT AREA: 0.1µm MIN GOLD OVER  
 0.5µm MIN Pd-Ni  
 SOLDER TAIL(TIN LEAD OPTION): 2.5µm MIN Sn-Pb  
 SOLDER TAIL(LEAD FREE OPTION): 2.5µm MIN PURE TIN

mat'l. code				tolerances unless otherwise specified		CUSTOMER COPY		 FCI <a href="http://www.fciconnect.com">www.fciconnect.com</a>		
ltr	ecn no	dr	date	linear	.X±.3		projection	title		
G					.XX±.13				DOUBLE-DECK HEADER EJECT ASSY	
					.XXX±.051				product family MCS	
				angles	0° ±2'		 MM scale 1:1	size dwg no		
				dr	D.SHEAFFER	9/16/96		code		
				enrg	D.BRANN	9/16/96		-		
				chr	D.BRANN	9/16/96		sheet		
				appd	D.BRANN	9/16/96	2 of			
sheet index	revision sheet									

Tous droits strictement reserves. Reproduction ou communication a des tiers interdite sous quelque forme que ce soit sans autorisation ecrite du proprietaire. Propriete de c FCI. Droits de reproduction FCI.

All rights strictly reserved. Reproduction or issue to third parties in any form whatever is not permitted without written authority from the proprietor. Property of FCI. Copyright FCI.

1 | 2

3

4

PRODUCT NO.  
95635-XXXX/XXXXLF

59.85  
52.07  
10 REF.  
THREADED INSERT  
2X  
10 REF.  
7.2  
5.8  
DIM "X"  
NOTE ⑤  
64.5  
93.8  
ESD CONTACT  
EMI CONTACT  
85.5  
13.0  
51.4  
54.2  
7.0  
31.5  
35.0  
HEX NUT  
1.905  
(7X)  
.70  
DIM "P"  
DIM "L"  
STAND-OFF

①  
②  
③  
HEX NUT

④  
⑤  
⑥  
HEX NUT

11.6  
5.8  
STAND-OFF HEIGHT  
DIM "L"  
2.7  
.95  
A1  
A35  
B1  
B35  
B34  
B68

P/N: 95635-XXXCA/XXXCALF  
ABOVE P.C.B.  
RIGHT/RIGHT PUSH-ROD  
P.C.B. LAYOUT 1 (SHT. 3)

A1  
A35  
A34  
A68  
B1  
B34  
B68

P/N: 95635-XXXCA/XXXCALF  
BELOW P.C.B.  
RIGHT/RIGHT PUSH-ROD  
P.C.B. LAYOUT 2 (SHT. 3)  
\*VIEW ROTATED 180°\*  
PUSH-ROD & DECK ARE  
AS VIEWED BY USER

NOTES (CONTINUOUS FROM SHEET 2):

① DIM "X"

4.25±.1	3.5±.1	5.0±.1
OTHERS	36,67	1,17,34,35,51,68

2 RECOMMENDED HOLD DOWN - 2mm SCREWS (95121)  
RECOMMENDED SCREW TORQUE: 1.0 TO  
1.5 MAX in-lbs. (1.2-1.7 cm-kgs).  
3 IF LEAD FREE P/N, THE HOUSING WILL WITHSTAND EXPOSURE TO  
260°C PEAK TEMPERATURE FOR 10 SECONDS IN A WAVE SOLDER  
APPLICATION WITH A 1.00MM MINIMUM THICK CIRCUIT BOARD.  
4 LEAD FREE PRODUCT MEETS EUROPEAN UNION DIRECTIVES AND OTHER  
COUNTRY REGULATIONS AS DISCRIBLED IN GS-22-008  
5 IF LEAD FREE P/N, PACKAGING MEETS GS-14-920 SPECIFICATION

mat'l. code				tolerances unless otherwise specified		CUSTOMER COPY		 FCI www.fciconnect.com		
ltr	ecn no	dr	date	linear	.X±.3		projection	title		
G					.XX±.13				DOUBLE-DECK HEADER EJECT ASSY	
					.XXX±.051				product family MCS	
				angles	0° ±2'		 MM scale 1:1	size dwg no		
				dr	D.SHEAFFER	9/16/96		code		
				enr	D.BRANN	9/16/96		-		
				chr	D.BRANN	9/16/96		sheet 3 of		
				appd	D.BRANN	9/16/96	A4		95635	
sheet index	revision sheet									

cage code

STATUS: Released 26 Printed: Feb 06, 2008

Tous droits strictement reserves. Reproduction ou communication a des tiers interdite sous quelque forme que ce soit sans autorisation ecrite du propriétaire. Propriete de c FCI. Droits de reproduction FCI.

All rights strictly reserved. Reproduction or issue to third parties in any form whatever is not permitted without written authority from the proprietor. Property of FCI. Copyright FCI.

1 | 2

3

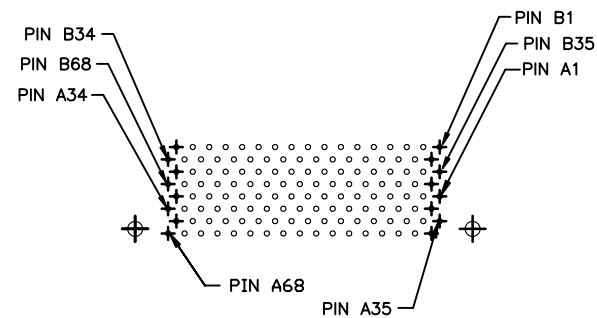
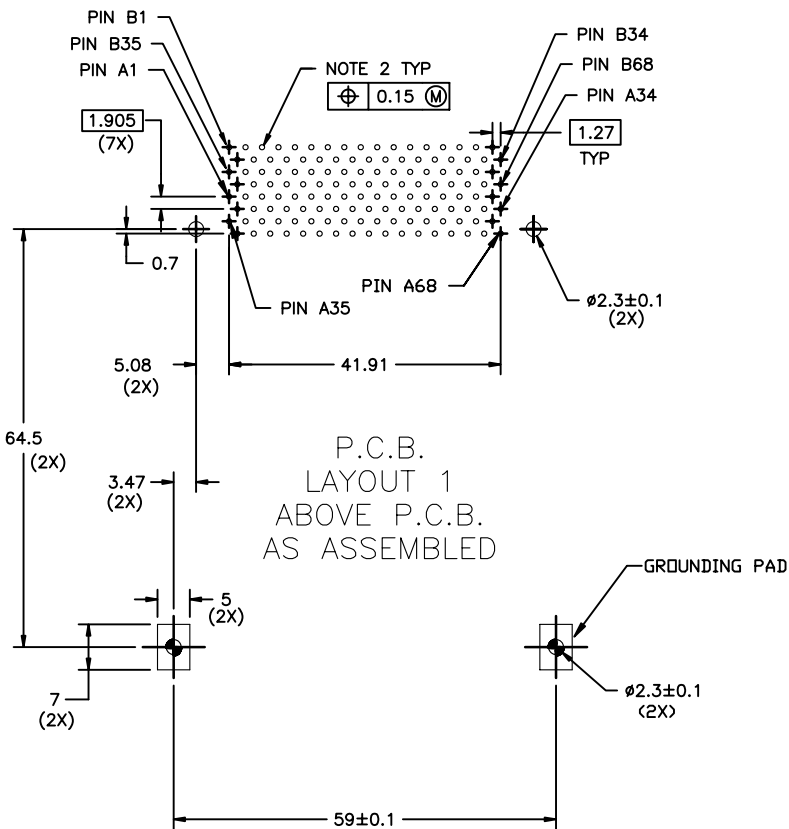
4

ACAD

PDM: Rev:H

Tous droits strictement reserves. Reproduction ou communication a des tiers interdite sous quelque forme que ce soit sans autorisation ecrite du Proprietaire. Propriete de c FCI. Droits de reproduction FCI.

All rights strictly reserved. Reproduction or issue to third parties in any form whatever is not permitted without written authority from the proprietor. Property of FCI. Copyright FCI.



NOTES:

1. ALL TOLERANCES  $\pm 0.15$  UNLESS NOTED.
2. RECOMMENDED DIAMETER IS  $\phi 1.0$  FOR PROCESSES USING PASTE REFLOW. HOLE MAY BE AS SMALL AS  $\phi 0.79$
3. BOARD VIEW FROM CONNECTOR MOUNTED SIDE TOP OF BOARD IN APPLICATION

mat'l. code				tolerances unless otherwise specified		CUSTOMER COPY	 FCI <a href="http://www.fciconnect.com">www.fciconnect.com</a>			
ltr	ecn no	dr	date	linear	.X $\pm$ .3	projection	title			
G					.XX $\pm$ .13			DOUBLE-DECK HEADER EJECT ASSY		
					.XXX $\pm$ .051			product family	MCS	code
				angles	0' $\pm$ 2'	 MM scale 1:1	size	dwg no		
				dr	L.POTTEIGER		3/25/02	A4	95635	
				enr	D.BRANN		3/25/02			sheet
				chr	D.BRANN		3/25/02			4 of
				appd	D.BRANN	3/25/02				
sheet index	revision sheet									